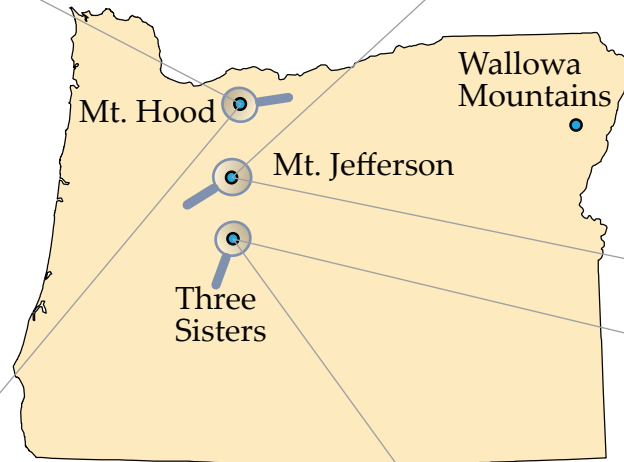
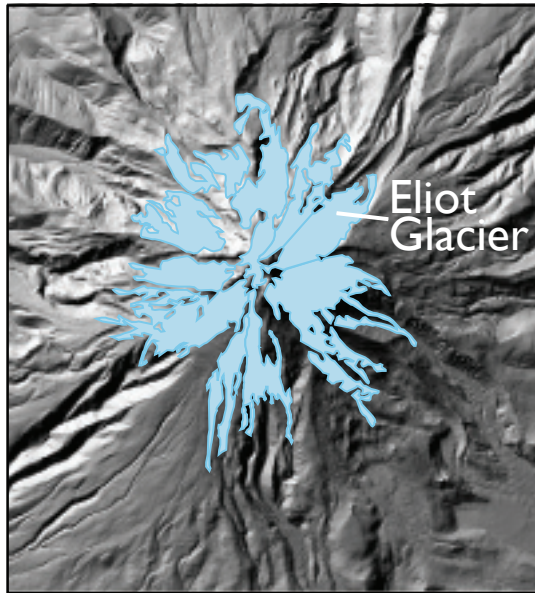


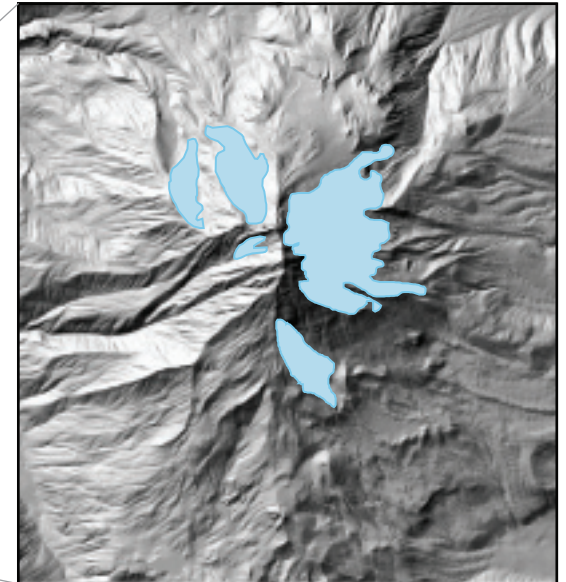
# Glaciers In Oregon

Oregon has many alpine (or mountain) glaciers on the highest peaks. One of the impacts of global climate change is that these glaciers are melting and may disappear by the middle of the century.

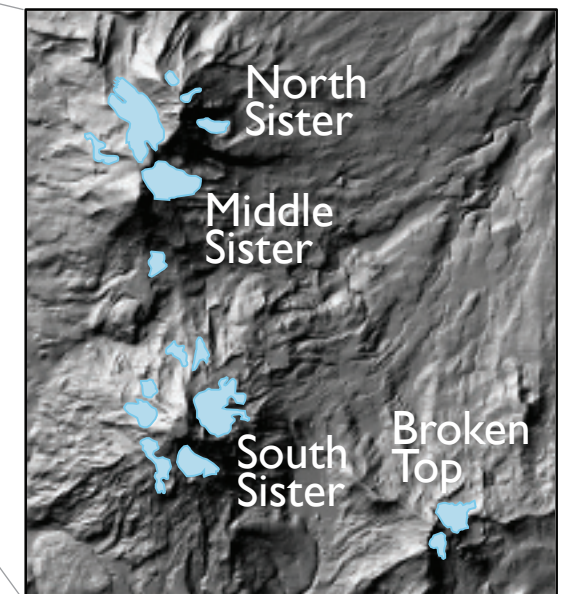
## Mt. Hood



## Mt. Jefferson



## Three Sisters



(1901)



(2005)

Eliot Glacier,  
Mt. Hood